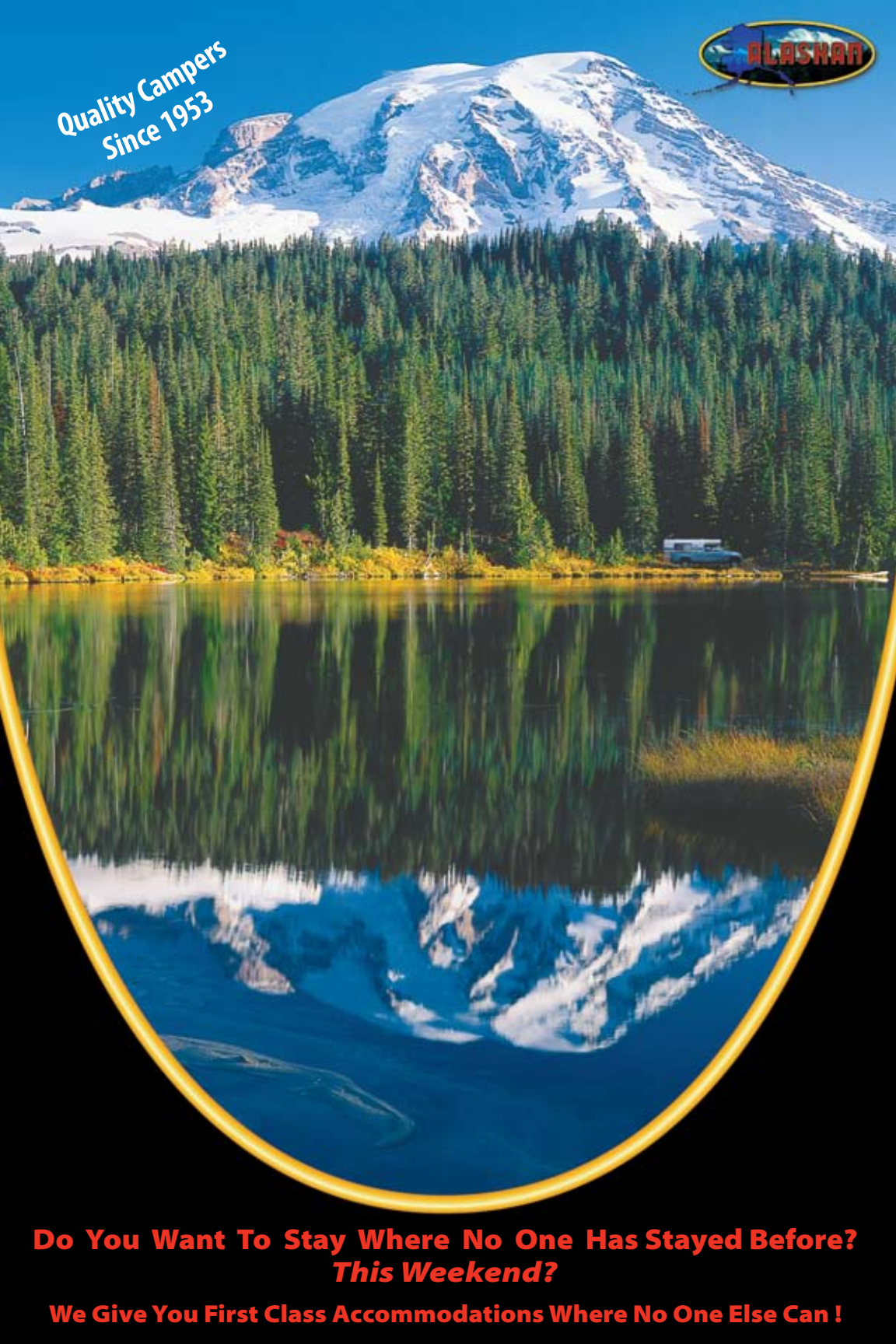


Quality Campers
Since 1953



**Do You Want To Stay Where No One Has Stayed Before?
*This Weekend?***

We Give You First Class Accommodations Where No One Else Can !

Imagine yourself in an ALASKAN

AS AN OUTDOOR ENTHUSIAST, Give Yourself the Advantage of a Distinctive **ALASKAN** Camper. The camper you enjoy sets the tone for your leisure time. Improving the quality of the camper you use can yield newfound satisfaction.

ALASKAN understands the importance of function and quality for the outdoor lifestyle. The Camper described in this brochure is designed to give outdoor enthusiasts a solid asset - with the functions to meet your needs.

The **ALASKAN** Camper is designed specifically for the way you really use your camper. That means it's rugged and sturdy at the same time that it's abundantly comfortable and functional. Superb seats support and cuddle you, the heating system keeps you warm and dry.



The first thing you notice about the **ALASKAN** Camper is that it doesn't look like other campers. It isn't a flat roofed square box. Rather, it's a camper designed from the bottom up by R.D. Hall, to be simple, rugged and a breakaway from the bulky ponderous design of a conventional pickup camper.

Many campers have the aesthetics and aerodynamics of a cube. The **ALASKAN** Camper is designed with a low aerodynamic drag factor and a low center of gravity in the travel position. The streamlined shape not only means flowing styling but also good air penetration. This camper is a pleasure to look at and driving with it is a dream.

Everything about an ALASKAN reaffirms the fact that this is the definitive camper.

The **ALASKAN** has become more popular as people realize bigger is not always better. When **MANEUVERABILITY**, **SAFETY** and **VALUE** come into play the **ALASKAN** leads the way.

The Benefits of Owning a telescopic **Alaskan** Camper are many:

- ▶ the top raises to a comfortable 6' 4" interior height,
- ▶ down it lowers the camper's center of gravity for a stable safe ride,
- ▶ lowered it reduces wind resistance for improved gas mileage,
- ▶ this lessens the chance of damage caused by overhead obstructions,
- ▶ allows maintaining maximum highway speed safely; more miles comfortably in a day,
- ▶ high resale value
- ▶ less depreciation
- ▶ lower initial expense
- ▶ lower operating expense



"IT RAISES - IT LOWERS" FOR SAFETY AND COMFORT



OTHER ADVANTAGES?

You will find fewer limitations on access; your truck is available for other uses; you can tow a boat, horse trailer or other recreational toys and you don't have to tow alternate transportation.

A curved one piece roof lets water run off helping to protect against leaks and reduces buffeting from side winds.

ALASKAN... Good



Looks That Work



An inviting Environment Helps

The **ALASKAN** is the standard for comparison in the industry. Luxurious and functional. Solid maple hand sanded trim with beautiful laminate interior. Plush upholstery that's comfortable and durably tough. Mini blinds are decorative and useful.

The galley is fully equipped for carefree living with a stainless steel sink, Atwood range and three way, 2.5 cu. ft. or 3.0 cu. ft. refrigerator.

Distinguished by luxurious amenities, superb craftsmanship and premium materials the **ALASKAN** is in a world of few equals.

What makes an **ALASKAN** so special? Details. Its telescopic design, thick foam insulation, metal corner angles, Hehr windows, solid-wall construction make an Alaskan an Alaskan.



Spring, Summer, Winter or F

With an **ALASKAN** you'll see sights that just aren't available from scenic turnoffs. Whether water, desert, or mountains surround you, there really is nothing like it.

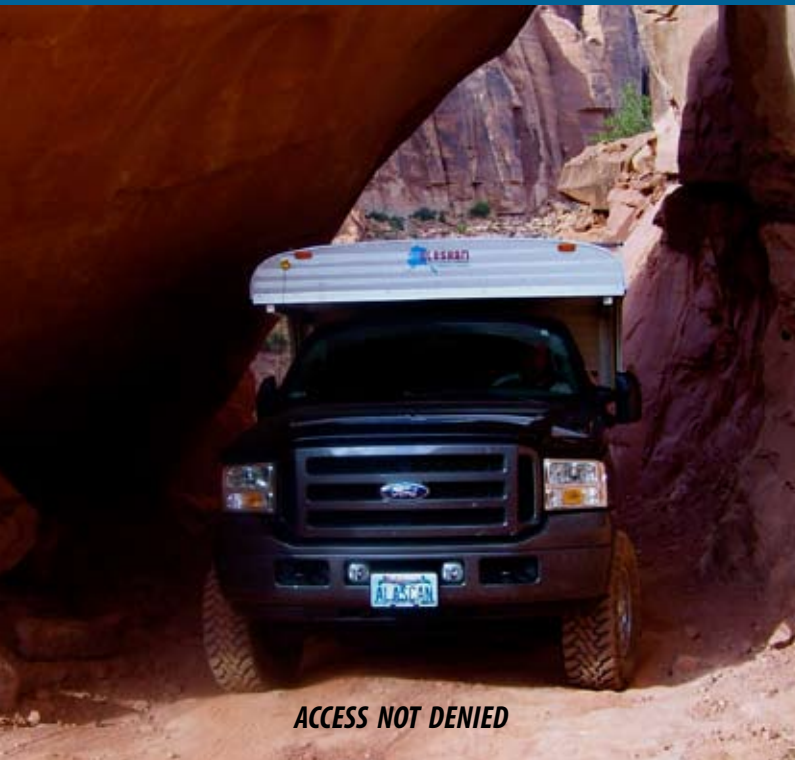


UNLIMITED PARKING SPACES



COOL SUMMER NIGHT IN ICELAND

all... It Doesn't Matter At All.



ACCESS NOT DENIED



WARM IN THE WINTER

ALASKAN delivers in every respect; it's the little things that spell the difference between a good camper and a great camper.

The **ALASKAN** is a superb camper both on the road and off the road. The **ALASKAN** is the premier camper.

This full featured camper - no matter how you look at it, offers the perfect blend of functionality, versatility and ease-of-use you are looking for!

In an **ALASKAN** getting away from civilization doesn't mean leaving behind all its trappings.

And an added bonus is the fact you can customize your **ALASKAN** to meet your special requirements.





ALASKAN

In all kinds of weather the "top up - top down" Alaskan design is superior

Why is the Alaskan Camper better than a conventional or popup truck camper?

- Hydraulic Lowered Top
- = less wind resistance
- = increased fuel mileage
- = lower center of gravity

- Insulated Solid Walls
- = no bears or intruders
- = warmer winter interior
- = cooler summer interior



- Full Raising Top
- = full height door
- = large glass windows

Alaskan Campers, Inc.
420 NE Alaskan Way
Chehalis, WA 98532

360.748.6494
alaskan@alaskancamper.com



"It Raises - It Lowers"

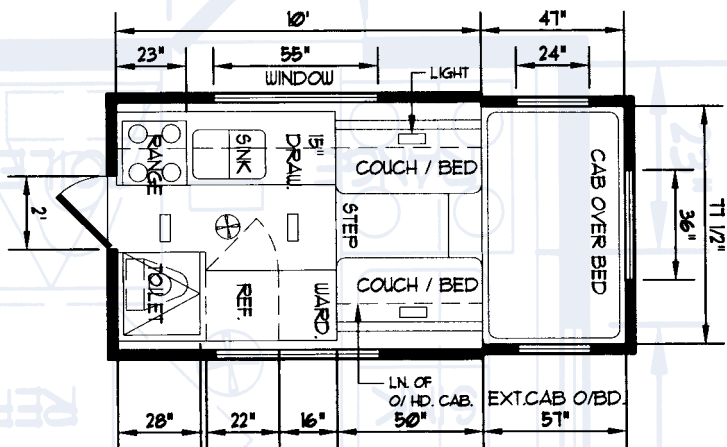


Remote Camping *"Without Roughing It"*

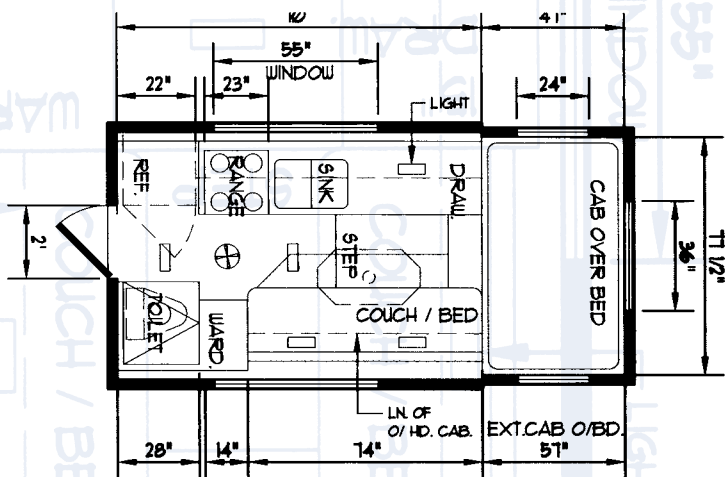
www.alaskancamper.com

Modify or Custom Design Your Own ALASKAN

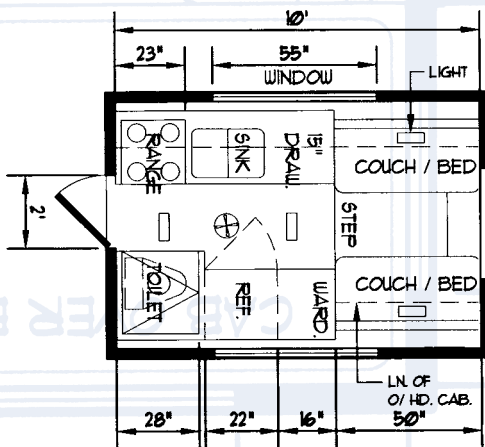
10' Cabover Front Dinette

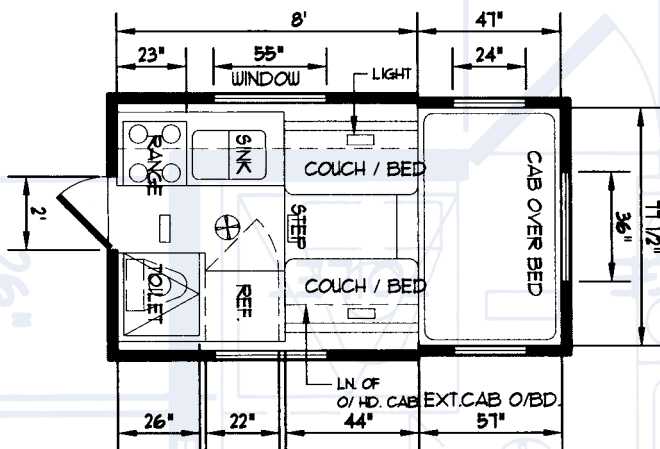


10' Cabover Side Dinette

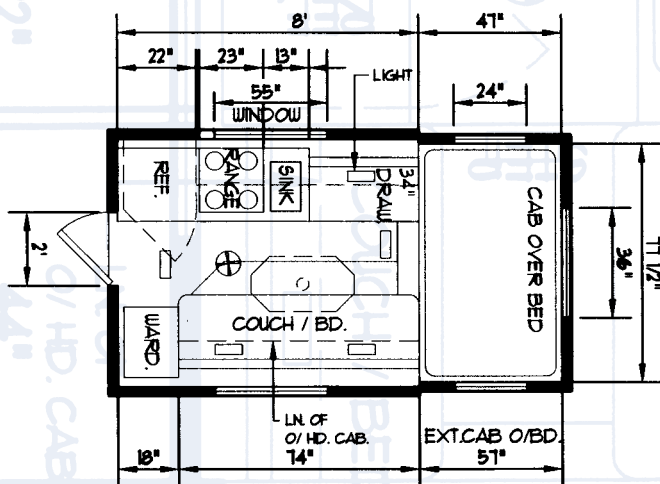


10' Non-Cabover Front Dinette

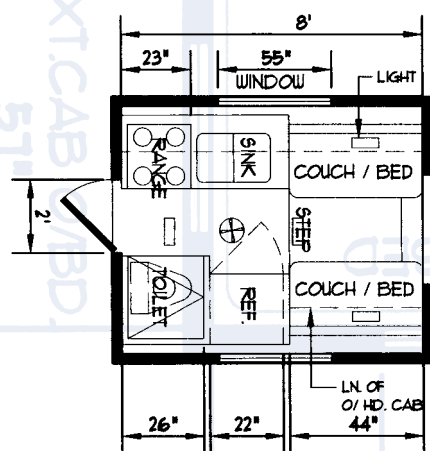




**8' Cabover
Front Dinette**



**8' Cabover
Side Dinette**



**8' Non-Cabover
Front Dinette**

In A Class By Itself... ALASKAN

Designed and engineered by Don and Irene Hall back in the very early fifties, **ALASKAN** has represented the state of the art for truck campers; a standard by which others are measured. Over the years, that benchmark has endured. With each year and each new technical advance, **ALASKAN** has evolved into an even more luxurious and high-tech camper with an enviable reputation for excellence and value. But don't just take our word for it. Visit us and put **ALASKAN** to the test. You'll see why we say ...**ALASKAN IS IN A CLASS BY ITSELF.**

ALASKAN ...

DOES IT ALL RIGHT! with its

- ▶ FOAM INSULATION for a superior R value and strength 1.
- ▶ Solid Wall Construction for added rigidity and durability
- ▶ ELECTRIC HYDRAULIC PUMP "raises and lowers" the top 6.
- ▶ 2 X 2 MICRO - LAM Construction for extra strength 1.
- ▶ Exclusive four layer foam and fiber Cushions 3.
- ▶ The finest HAND SANDED DOVETAIL DRAWERS 7 .
- ▶ **ALASKAN** steel framed spring base seats, the best
- ▶ **ALASKAN** FOLDING STEPS extra wide and deep * 5.
- ▶ LARGE WINDOWS for a bright interior
- ▶ JACKS for easy removal of the camper * 2.
- ▶ PREMIUM CONGOLEUM Flooring
- ▶ STAINLESS STEEL SINK
- ▶ SPACIOUS COUNTER TOPS
- ▶ CASSETTE TOILET * 4.

**Optional*



7



3



The One Camper You Can Depend On

There's a feeling you get in an **ALASKAN**. Call it confidence, satisfaction or pride. Your **ALASKAN** rewards you day in and day out with its legendary telescopic design, durability, comfort and style. It's quite a friend - the longest lasting camper on the road and the oldest production camper in the world.



1



2



4



5



6

ALASKAN - The Traveling Machine

So, why should you buy an Alaskan Camper?

It might be something as simple as the original design concept. The Original **ALASKAN** was designed to be a simple step forward in camper design that reduced the bulky profile of a camper and still provided all of the amenities necessary for camping and travel. The original **ALASKAN** was designed to conquer the Alcan Highway and provide protection from wind, cold, rain and snow. It also was built to standards that would allow the camper to sustain travel over rough terrain and not fall apart.

The **ALASKAN** was designed to be lightweight and structurally superior. It had a low profile in it's travel position by utilizing an ingenious patented hydraulic lift system that allowed the top to be raised and lowered. This allowed full standing room inside the camper when parked but when traveling the top was snugged down so only a small part of the top was exposed to the wind.

It might be the quality materials and craftsmanship that are part of the **ALASKAN**.

It might be that the **ALASKAN** gives you a full height door and large eye level windows with safety glass, some things not found on popup campers.

It might be the fact that you can custom design your own special **ALASKAN** Camper.

Over the years we have constantly improved the **ALASKAN**, while still adhering to the original design concept. Several companies have sought to build similar campers and have come and gone. Today the **ALASKAN** is the only solid wall camper with a top that raises and lowers hydraulically.

Mont - St - Michel, France



Features, Options and Information

Standard Features:

- 2.5 cu. ft. 3-way DOMETIC Refrigerator
- 16,000 BTU HYDROFLAME Forced Air Furnace
- HEHR Radius Windows - Extra Large
- Dual Reading Lights in Cabover
- WILSONART Kensington Oak Interior
- Stainless Steel Sink
- Foamed in-place Insulation
- One Piece Curved Roof
- WEDGEWOOD Stove/Oven
- CUSTOM seats
- Deep Cycle Battery
- Solid Maple Hand Sanded Trim
- City Water Hookup
- Sliding Cabover Windows
- Exterior Color Stripe Option
- Wood Dovetail Drawers
- Mini Blinds
- Porch Light
- 27 Gallon Water Tank
- SHURFLO Electric Water Pump
- 12v/110v Power Converter/Battery Charger

Optional Equipment

- 3.0 cu. ft. Refrigerator - Norcold
- Cassette Toilet
- Comfort Air, 12v
- Folding Step
- Removable Jacks
- Jack Plates only
- Tie Downs
- Turnbuckles set of 4
- Boat Rack & Clamps
- Outside Shower
- 12 Volt Outlets
- AM-FM CD Radio
- Air Conditioning Wiring & Support
- Utility/Service Box
- Extended Cabover Bed
- Custom Color Stripes
- Custom Engineering
- Awning Rail
- TV Antenna
- Suburban Water Heater

Technical Specifications

Weights	Wet
8'	1740
10'	1910
Outside Height Raised - 82"	
Outside Height Lowered - 61"	
Width - 88"	

Our Thanks To:

WIDE Design Team
Designers Service Bureau
Toni Ritter
Jason Mortis, Blackfen Studios

Prices subject to change without notice. Rights reserved to make material, equipment, design and dimension changes to insure progressive development. One-year warranty on hydraulic system of all new Alaskan Campers.

ALASKAN Campers Inc.
420 N.E. Alaskan Way
Chehalis, WA 98532
(360) 748-6494

email: alaskan@alaskancamper.com
web site: <http://www.alaskancamper.com>

